



Custom Fiber Optic and Copper Network Solutions

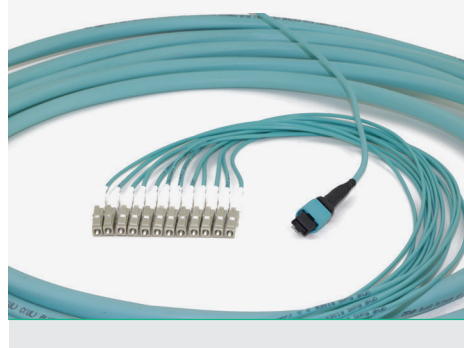


COMPLETE CONNECTIVITY SOLUTION

# Complete Connectivity Solution



**JUMPERS AND PIGTAILS** LITRA MFG manufactures a comprehensive range of fiber jumpers and pigtails using industry standard fiber cables (Singlemode OS2 and Multimode OM1, OM2, OM3 and OM4) terminated using a wide range of connectors, including ST, SC, FC, LC, SCAPC and FCAPC. All of our manufactured cables are 100% tested to meet current industry standards.

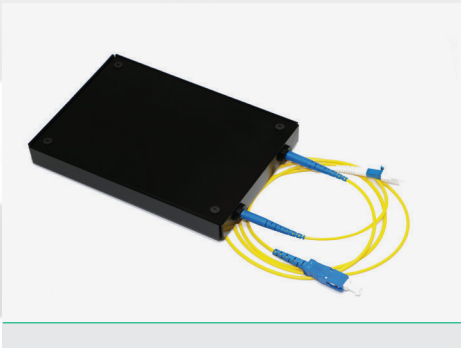


**MPO/MTP™ ASSEMBLIES** LITRA MFG's multimode MPO/MTP™ assemblies are manufactured to the highest industry standards using high quality components that provide you with the confidence of superior network performance and reliability. Various configurations are available including trunks, jumper cables, MPO/LC and MPO/SC hybrid assemblies in fiber counts from 12-144. Cable construction can be riser, plenum, LSZH or armored.



**ST3300 OTDR** The ST3300 OTDR combines the industry's leading OTDR technology with visible laser source in one hand-held unit. Optimized for point-to-point testing of passive optical networks (PON), it offers several wavelength configurations and a wide range of options for first-class flexibility and full coverage of short-haul OTDR test applications.

This OTDR also includes smart software that provides pass/fail status at all wavelengths as well as span loss, ORL, fiber length and macro bend locations in a single window.



**OTDR LAUNCH BOX** An Optical Time Domain Reflectometer (OTDR) launch cable connects the OTDR to the fiber link under test. Its function is to overcome the "Dead Zone" which is caused by the near end reflection at the OTDR connector interface. Using a launch cable enables an accurate near end measurement of the input connector of the fiber link under test.



**ST800K OPTICAL POWER METER** With a wide range of functions the ST800K optical power meter is a powerful tool for use in fiber-optic network installation and maintenance. Its rugged, durable construction makes it the perfect choice for field applications as well.

The ST800K Optical Power Meter can test optical power within the range of 800~1700nm. There are six wavelength calibration points; 850nm, 1300nm, 1310nm, 1490nm, 1550nm and 1625nm. It can be used for linearity and non-linearity tests and it can display both direct and relative tests of optical power. Suitable for testing of LAN, WAN, metropolitan network, CATV net or long-distance fiber networks.



**LOOPBACK COMPONENTS** Loopback Components provide a return path for a fiber optic signal and are typically used for fiber optic diagnostic testing or network restoration analysis. Fiber loopback modules are an economical solution for a number of fiber optic testing applications. Available in SM and MM with SC, LC or MPO connectors.



### RACK & WALL MOUNT SHELVES

LITRA MFG stocks a range of rack and wall mount shelves that can accommodate 6 – 288 fibers using the popular LGX adapter panel footprint. Rack mounts shelves are available in 1RU, 2RU and 4RU sizes. They can also be shipped pre-loaded with adapter panels (patch only) or with loaded adapter plates, splice trays and fiber pigtailed (patch and splice).



**SPLICE TRAYS** Splice trays organize and provide protection for fusion and mechanical splicing methods. They can be used indoor or outdoor with loose-tube or tight-buffered cables. Made of lightweight, durable plastic they are stocked in 12 and 24-fiber versions and include attachment points for strain relief.

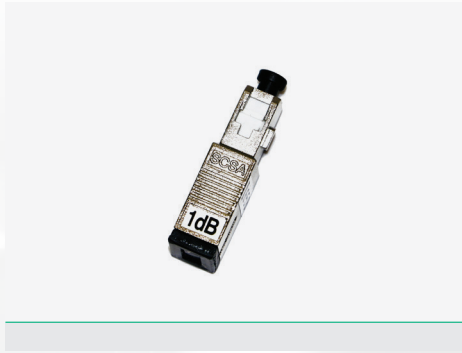


**ADAPTER PANELS** LITRA MFG's wide range of Adapter Panels are designed to fit the popular LGX footprint. SC adapters are available in 6-pack simplex and 12-pack duplex panels. LC adapter panels are available in 12-pack duplex and 24-pack quad versions. Adapter panels are also available for ST and FC connectors in 6- and 12-pack configurations. Adapter colors of green (APC), blue (SM) and beige (MM) are standard.



### FIBER TERMINAL BOXES

LITRA MFG Fiber Terminal boxes come in four sizes allowing customer premise termination from 4 to 96 fibers. Manufactured using ABS plastic and available in waterproof versions, these boxes can be supplied empty or configured with fiber adapters and connectorized pigtailed ready for customer installation.



**ATTENUATORS** In-Line (Male/Female) attenuators in the range of 1 – 20dB for SC, SC/APC and LC connectors.



**GX37 FUSION SPLICER** The GX37 Fusion Splicer incorporates the latest automatic core-alignment technology and has preprogrammed SM and MM splicing profiles.

The GX37 Splicer has an integrated and automated splice protection oven and also comes with a precision cleaving tool and a set of replacement electrodes.

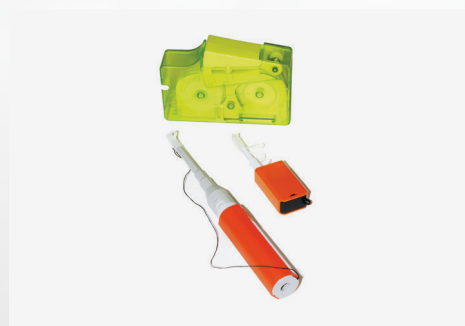


### PLANAR LIGHTWAVE CIRCUIT (PLC) SPLITTERS

Planar Lightwave Circuit (PLC) splitters feature a wide operating range, channel to channel uniformity, high reliability and small size. These are widely used in PON networks and FTTx applications for signal splitting and management. Available in 1x2 through 32 fiber and 2x2 through 32 fiber.



**VISUAL FAULT LOCATOR** LITRA MFG offers a Visual Fault Locator (VFL) based on a high power red laser emitting at a wavelength of 650nm. The VFL-30-U is a compact, pen-shaped VFL with an optical output of 30mW. Applications include: Location of fiber bends or breaks, determination of fiber connector and splice failures, identification and tracing of fibers between patch panels. Operation in continuous wave or pulsed mode enables simplification of the trouble-shooting process.

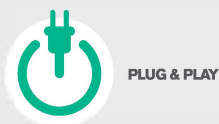


### CLEANING SUPPLIES & KITS

LITRA MFG stocks a range of cleaning supplies and kits to ensure correct cleaning of fiber connector end faces. Cassette cleaners can be used for all male fiber connectors; LC, MU, ST, SC, FC for both UPC and APC finishes. Pen cleaners are available for 1.25mm ferrules (LC and MU) and 2.5mm ferrules (SC, FC and ST) connectors. Pen cleaners can also be used for the inside of fiber adapters.

# COMPLETE CONNECTIVITY SOLUTION

<b>Rack &amp; Wall Mount Fiber Enclosures:</b>	LGX format 1RU, 2RU & 4RU rack mounted fiber enclosures and a wall mount version. These enclosures can be pre-configured for Termination and Termination/Splice applications. Rack mount enclosure capacity is up to 288 fibers (4RU) and the wall mount version up to 96 fibers.
<b>LGX Format Adapter Plates:</b>	A range of LGX-format adapter plates with 6 – 24 fiber capacity for all standard fiber adapter styles (SC, SCAPC, FC, FCAPC, ST, LC, LCAPC and MPO).
<b>Splice Trays:</b>	Designed for use with indoor enclosures or outdoor splice cases using tight-buffered or loose-tube cables. Made of lightweight, durable plastic they are stocked in 12 and 24-fiber versions and include attachment points for strain relief.
<b>Multi-Fiber Pigtails &amp; Jumper Assemblies:</b>	Indoor and Indoor/Outdoor 900um distribution pigtails and jumpers in Riser or Plenum in 6 – 144 fibers.
<b>Trunk &amp; Fan Out Assemblies:</b>	Available in Singlemode (OS2) and Multimode (OM3) in 2, 4, 6, 8, 12 and 18 fiber configurations.
<b>MPO/MTP™ Assemblies:</b>	LITRA MFG offers a full range of MPO/MTP™ assemblies and modules, including Trunks, Fan-Outs and MPO-LC cassettes.
<b>Simplex &amp; Duplex Fiber Jumpers:</b>	All configurations of Singlemode (OS2) and Multimode (OM1, OM2, OM3 & OM4) using ST, FC, FCAPC, SC, SCAPC, LC & LCAPC connectors. Stock in 1m, 2m, 3m, 5m, 10m and 15m cables for ST, FC, SC and LC duplex.
<b>Terminal Boxes:</b>	A series of 4 different size boxes providing customer premise termination from 4 to 96 fibers. Manufactured using ABS and available in waterproof versions.
<b>Fiber Splitters:</b>	A range of Singlemode fiber splitters in 1x2 to 1x32 configurations available in pigtail and module format.
<b>In-Line Singlemode Attenuators:</b>	LITRA MFG attenuators use a proprietary type of metal doped fiber which absorbs the signal as it passes through it. The attenuators are a standard Build Out (male-female) configuration that are commonly used in a patch panel application.
<b>Loop Back Components:</b>	Enables remote testing and transceiver trouble shooting. Available in Singlemode LC, SC and MPO and Multimode OM1 and OM2 for LC, SC and MPO.
<b>OTDR Test Equipment:</b>	Dual Wavelength (1310 & 1550nm) OTDRs with range up to 120km. Built in VFL. Compact, user friendly Singlemode launch boxes with 100 – 250 meters of fiber.
<b>Fiber Test Equipment:</b>	1310 and 1550nm Laser Source. Fiber optic power meters calibrated at 850, 1310, 1550 and 1625nm.
<b>Fusion Splicer:</b>	Automated Singlemode and Multimode Fusion Splicer using Core Alignment, includes a precision cleaving tool. Available for purchase or rent.
<b>Visual Fault Locator:</b>	High powered (30mW) VFL for link fault location. Has a CW and Pulse operation with a 2.5mm interface. A range of non-contact launch cables available.
<b>Connector Cleaning Cassettes &amp; Pens:</b>	Two types of cassette cleaners using lint free micro-fiber tapes. Pen cleaners for 2.5mm (SC, FC & ST) and 1.25mm ferrules (LC & MU) for direct connector and inside adapter cleaning.



LITRAMFG.com | 770-446-7050 | sales@LITRAMFG.com | 6733-A Jones Mill Court, Peachtree Corners, GA 30092

